



SureTrack

Affordable Web Based Vehicle Tracking



JabbaTalk



JabbaTalk's SureTrack

JabbaTalk's SureTrack is an affordable Web Based Tracking Solution that is easy to use and can be customised to your individual requirements.

Because you buy the equipment up-front we do not hold you to a contract term, so if your requirements change we can turn a tracker off with just 30 days notice.



Full European Coverage at no extra Charge



User
Friendly

Web-Based Platform Main Functionality

SureTrack is a flexible web-based tracking platform, which offers a unique combination of highly advanced functionality with a user friendly interface.

Main Functionality

- * Online CANbus information;
- * User friendly interface;
- * Multi-Language;
- * Advanced alarms/notifications;
- * Management of additional mechanisms;
- * Advanced POI , Geo-Fences and Geo-Corridors;
- * Variety of adjustable reports and diagrams;
- * Dispatching and communication with driver (MRM);





Web-Based Platform Main Functionality

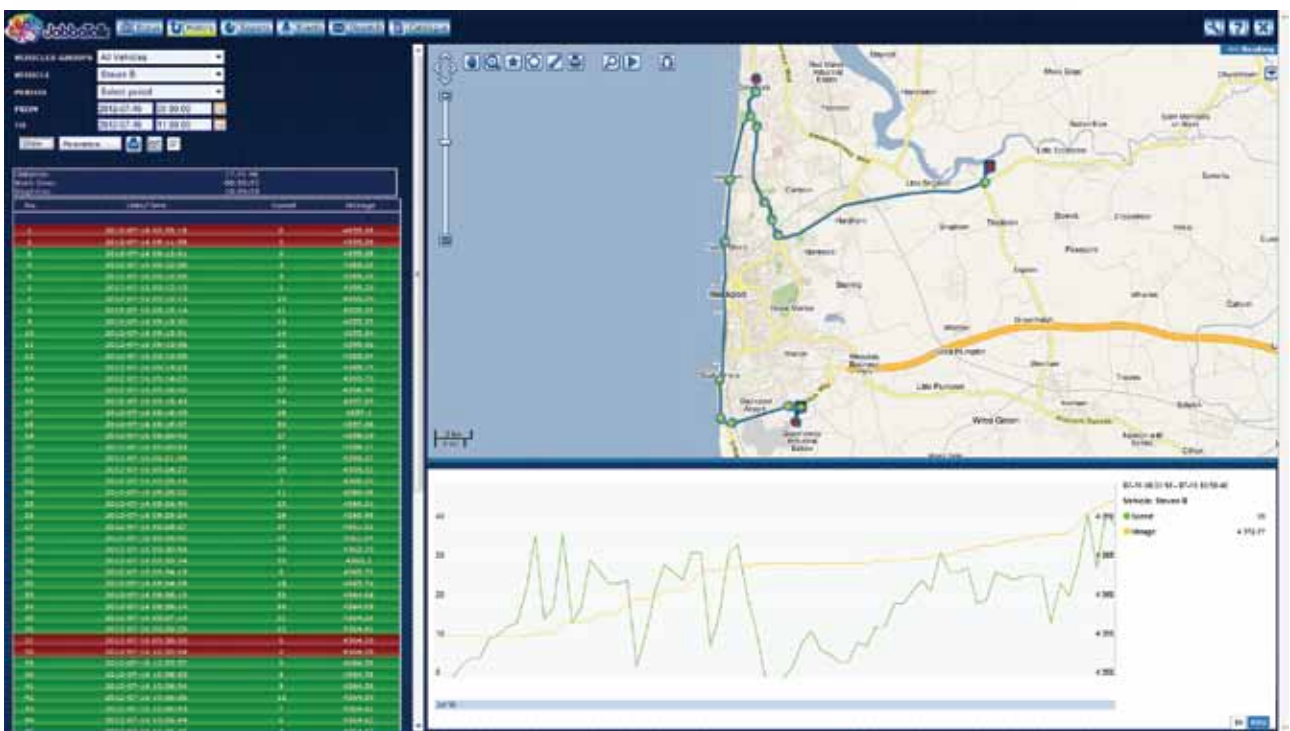
JabbaTalk offers a ready-to-go GPS monitoring solution, which includes all the necessary hardware, user friendly web-based software, detailed maps, unsurpassed technical support and is based on a rich experience and "know-how" technology.

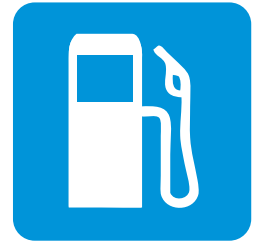
Start-Stop
 Period: 2012-07-31 00:00:00 -- 2012-07-31 23:59:59
 Company name, address: JabbaTalk, Lancaster LA1 1RT
 Vehicle make, model: S24 KTL
 Vehicle number: S24 KTL
 Generated by Chris
 Generated on: 2012-09-03 09:12:09

Time	Lat	Long	Alt	Speed	Heading	Acc	Temp	Pressure	Humidity	Light	Power	Ignition	Door
00:00	53.750000	-1.070000	100	0.0	0	0.0	15.0	1013.2	50	0.0	0.0	0	0
00:01	53.750000	-1.070000	100	0.0	0	0.0	15.0	1013.2	50	0.0	0.0	0	0
00:02	53.750000	-1.070000	100	0.0	0	0.0	15.0	1013.2	50	0.0	0.0	0	0
00:03	53.750000	-1.070000	100	0.0	0	0.0	15.0	1013.2	50	0.0	0.0	0	0
00:04	53.750000	-1.070000	100	0.0	0	0.0	15.0	1013.2	50	0.0	0.0	0	0
00:05	53.750000	-1.070000	100	0.0	0	0.0	15.0	1013.2	50	0.0	0.0	0	0
00:06	53.750000	-1.070000	100	0.0	0	0.0	15.0	1013.2	50	0.0	0.0	0	0
00:07	53.750000	-1.070000	100	0.0	0	0.0	15.0	1013.2	50	0.0	0.0	0	0
00:08	53.750000	-1.070000	100	0.0	0	0.0	15.0	1013.2	50	0.0	0.0	0	0
00:09	53.750000	-1.070000	100	0.0	0	0.0	15.0	1013.2	50	0.0	0.0	0	0
00:10	53.750000	-1.070000	100	0.0	0	0.0	15.0	1013.2	50	0.0	0.0	0	0
00:11	53.750000	-1.070000	100	0.0	0	0.0	15.0	1013.2	50	0.0	0.0	0	0
00:12	53.750000	-1.070000	100	0.0	0	0.0	15.0	1013.2	50	0.0	0.0	0	0
00:13	53.750000	-1.070000	100	0.0	0	0.0	15.0	1013.2	50	0.0	0.0	0	0
00:14	53.750000	-1.070000	100	0.0	0	0.0	15.0	1013.2	50	0.0	0.0	0	0
00:15	53.750000	-1.070000	100	0.0	0	0.0	15.0	1013.2	50	0.0	0.0	0	0
00:16	53.750000	-1.070000	100	0.0	0	0.0	15.0	1013.2	50	0.0	0.0	0	0
00:17	53.750000	-1.070000	100	0.0	0	0.0	15.0	1013.2	50	0.0	0.0	0	0
00:18	53.750000	-1.070000	100	0.0	0	0.0	15.0	1013.2	50	0.0	0.0	0	0
00:19	53.750000	-1.070000	100	0.0	0	0.0	15.0	1013.2	50	0.0	0.0	0	0
00:20	53.750000	-1.070000	100	0.0	0	0.0	15.0	1013.2	50	0.0	0.0	0	0
00:21	53.750000	-1.070000	100	0.0	0	0.0	15.0	1013.2	50	0.0	0.0	0	0
00:22	53.750000	-1.070000	100	0.0	0	0.0	15.0	1013.2	50	0.0	0.0	0	0
00:23	53.750000	-1.070000	100	0.0	0	0.0	15.0	1013.2	50	0.0	0.0	0	0
00:24	53.750000	-1.070000	100	0.0	0	0.0	15.0	1013.2	50	0.0	0.0	0	0
00:25	53.750000	-1.070000	100	0.0	0	0.0	15.0	1013.2	50	0.0	0.0	0	0
00:26	53.750000	-1.070000	100	0.0	0	0.0	15.0	1013.2	50	0.0	0.0	0	0
00:27	53.750000	-1.070000	100	0.0	0	0.0	15.0	1013.2	50	0.0	0.0	0	0
00:28	53.750000	-1.070000	100	0.0	0	0.0	15.0	1013.2	50	0.0	0.0	0	0
00:29	53.750000	-1.070000	100	0.0	0	0.0	15.0	1013.2	50	0.0	0.0	0	0
00:30	53.750000	-1.070000	100	0.0	0	0.0	15.0	1013.2	50	0.0	0.0	0	0
00:31	53.750000	-1.070000	100	0.0	0	0.0	15.0	1013.2	50	0.0	0.0	0	0
00:32	53.750000	-1.070000	100	0.0	0	0.0	15.0	1013.2	50	0.0	0.0	0	0
00:33	53.750000	-1.070000	100	0.0	0	0.0	15.0	1013.2	50	0.0	0.0	0	0
00:34	53.750000	-1.070000	100	0.0	0	0.0	15.0	1013.2	50	0.0	0.0	0	0
00:35	53.750000	-1.070000	100	0.0	0	0.0	15.0	1013.2	50	0.0	0.0	0	0
00:36	53.750000	-1.070000	100	0.0	0	0.0	15.0	1013.2	50	0.0	0.0	0	0
00:37	53.750000	-1.070000	100	0.0	0	0.0	15.0	1013.2	50	0.0	0.0	0	0
00:38	53.750000	-1.070000	100	0.0	0	0.0	15.0	1013.2	50	0.0	0.0	0	0
00:39	53.750000	-1.070000	100	0.0	0	0.0	15.0	1013.2	50	0.0	0.0	0	0
00:40	53.750000	-1.070000	100	0.0	0	0.0	15.0	1013.2	50	0.0	0.0	0	0
00:41	53.750000	-1.070000	100	0.0	0	0.0	15.0	1013.2	50	0.0	0.0	0	0
00:42	53.750000	-1.070000	100	0.0	0	0.0	15.0	1013.2	50	0.0	0.0	0	0
00:43	53.750000	-1.070000	100	0.0	0	0.0	15.0	1013.2	50	0.0	0.0	0	0
00:44	53.750000	-1.070000	100	0.0	0	0.0	15.0	1013.2	50	0.0	0.0	0	0
00:45	53.750000	-1.070000	100	0.0	0	0.0	15.0	1013.2	50	0.0	0.0	0	0
00:46	53.750000	-1.070000	100	0.0	0	0.0	15.0	1013.2	50	0.0	0.0	0	0
00:47	53.750000	-1.070000	100	0.0	0	0.0	15.0	1013.2	50	0.0	0.0	0	0
00:48	53.750000	-1.070000	100	0.0	0	0.0	15.0	1013.2	50	0.0	0.0	0	0
00:49	53.750000	-1.070000	100	0.0	0	0.0	15.0	1013.2	50	0.0	0.0	0	0
00:50	53.750000	-1.070000	100	0.0	0	0.0	15.0	1013.2	50	0.0	0.0	0	0
00:51	53.750000	-1.070000	100	0.0	0	0.0	15.0	1013.2	50	0.0	0.0	0	0
00:52	53.750000	-1.070000	100	0.0	0	0.0	15.0	1013.2	50	0.0	0.0	0	0
00:53	53.750000	-1.070000	100	0.0	0	0.0	15.0	1013.2	50	0.0	0.0	0	0
00:54	53.750000	-1.070000	100	0.0	0	0.0	15.0	1013.2	50	0.0	0.0	0	0
00:55	53.750000	-1.070000	100	0.0	0	0.0	15.0	1013.2	50	0.0	0.0	0	0
00:56	53.750000	-1.070000	100	0.0	0	0.0	15.0	1013.2	50	0.0	0.0	0	0
00:57	53.750000	-1.070000	100	0.0	0	0.0	15.0	1013.2	50	0.0	0.0	0	0
00:58	53.750000	-1.070000	100	0.0	0	0.0	15.0	1013.2	50	0.0	0.0	0	0
00:59	53.750000	-1.070000	100	0.0	0	0.0	15.0	1013.2	50	0.0	0.0	0	0
01:00	53.750000	-1.070000	100	0.0	0	0.0	15.0	1013.2	50	0.0	0.0	0	0

Summary of trip data:

Item	Value
Total Time	00:00:00
Start/End	00:00:00 / 01:00:00
Total Distance	0.00
Max Speed	0.00
Total Fuel Used	0.00
Total Fuel Cost	0.00
Total Fuel Cost @ 150p	0.00
Total Cost	0.00





Fuel Consumption

With the assistance of our system you can control your fuel usage easier than ever before. This can reduce your business overhead by a significant amount. We give you the opportunity to monitor both of the most important readings:

- * Fuel consumption which comes from your on-board computer.
- * Fuel level in the tank.

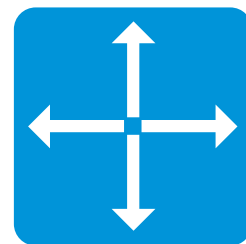
Fuel at day start	Fuel at day end	Total Fuel
906	672	234

SureTrack allows you to monitor fuel usage and identify fuel thefts. This improves the efficiency of your fleet and by comparing both fuel level in the tank and fuel consumption, you can achieve the most reliable and secure data.

Total distance	Fuel consumption (ltr /100 km)
301.75	34.80

In a recent survey, we found nearly 90% of our existing customers found some level of fraud or “wrong doing” within a week of having our Trackers installed!!

Fleet efficiency is instantly improved as driver behavior changes.



Choice

SureTrack allows five different Tracking Devices to all operate on the same platform, which means you can monitor all of your assets, but only pay for the technology you require.

FM-Eco

The FM-Eco is our basic hard wired Tracker, however, it is by far our most popular. It is designed for people who want to know where their vehicles are in real time, and where they have been in the past. Standard reports are all available, allowing you to verify time sheets and route selection. Driver behaviour also improves simply because they know they are being monitored. The FM-Eco also allows you to add on other sensors such as door sensors, driver identification sensors, etc....

FM-Pro

The FM-Pro gives you the same functions as the FM-Eco but with the added advantage of interrogating the vehicles on-board computer. So with the FM-Pro, you can measure things like the amount of fuel that goes through the fuel pump, the fuel remaining on board, or even see the actual Odometer reading in real time. Driver Identification can be achieved with a dallas key or keycode input and the list of add on accessories is only limited by your imagination.

FM-Tco

The FM-Tco does all of the functions of the FM-Pro but also allows you to interrogate a digital tachograph, which will not only identify the driver but also see remaining drive time available.

FM-Ttu

Our Trailer Tracking unit is discreetly hidden away inside the number plate holder giving similar data to the FM-Eco unit. Its 6500Mah battery can report up to three months without being connected to a tractor unit, and each time it is connected, it recharges the battery.

Personal Tracker

A pendant that hangs around the neck of the wearer but uses the same SureTrack web platform. This provides similar data to the FM-Eco unit, so you can see where the person is and where they have been. It is particularly useful for tracking security personnel, the elderly and young children.



JabbaTalks Trailer Tracking Solution...

The JabbaTalk trailer solution offers the same market leading selection of services as our standard tracking platform with the added benefit of specially designed trailer hardware including:

Rugged waterproof enclosure, battery back up and internal charging circuit. The JabbaTalk platform is web based, meaning no software files are required on any individual PC. You can track and monitor your mobile assets from anywhere with an internet connection using our secure log in procedure.

Key benefits:

- Improved trailer utilisation
- Reduced maintenance
- Increased security of sensitive loads
- Locate 'lost' trailers
- Easy self installation



The JabbaTalk SureTrack solution is designed to help your business reduce operating costs and increase revenues, through improving productivity, efficiency and ultimately delivering better customer service.

How it works:

The unit is installed into the trailer and can be connected up through the vehicles' cabling so that when the trailer is connected to a cab or tractor unit, the device is running from the main vehicle power. As soon as the trailer is disconnected, the device uses its own battery power to generate location reports.

Length of operating time:

This will be subject to how the unit is configured to report. We are able to customise the reporting level in order to extend the life of the battery when the trailer is disconnected, it may be possible to achieve up to 3 months of reporting on a stand alone trailer.

No two companies have the need for the same information, so we can supply five different models of trackers, so you get exactly what you want. Add the fact that you can “bolt-on” accessories such as temperature and load sensors and you get a truly personalised solution.

If you add a Garmin Display unit to your tracker, destination and route information can be sent directly to your driver free of charge as well as allowing the driver to send simple responses. This feature can be added to your existing Garmin.

We keep our pricing models simple and easy to understand. You have two clear options. Be very wary about companies offering rental packages. These companies build up customer bases of people who generally can't get finance. The inevitable always seems to happen in that the companies stop paying the rental and the tracking company is left with hardware that has not been paid for. Many tracking companies who have adopted this model have then ended up in liquidation themselves.



www.facebook.com/JabbaTalk



www.twitter.com/JabbaTalk



Jabba Talk

Unit 2, Riverside Park,
Caton Road,
Lancaster,
LA1 3PE

Customer Services: 0333 240 1185
General Sales: 0333 240 1186

www.jabbatalk.co.uk

